

Chikafrik Ruffled sleeve mini dress pattern includes 3 PDF files: Ruffled sleeve mini dress pattern printable in A4, Ruffled sleeve mini dress pattern printable in A0 and instructions.

1.5 cm seam allowance included and 1 cm for the hem.

Pattern file designed with layers. There is an option to print only your size, few or all sizes if necessary, choosing them in Adobe Acrobat (keep always legend layer) .

This pattern is a beginner sewing level pattern, requires basic sewing experience.

What fabric to use better? I used a cotton cambric fabric to make this dress but you can use other type of fabric depending on the look you are going for. Enjoy!

Pattern Sizes: The pattern include 7 sizes XXS to XXL, 34-36 – 38 – 40 – 42- 44-46 Europe size, (4- 6 -8 - 10 -12 -14-16 US size), (6-8 -10 -12- 14-16-18 UK size)

Items needed to make Ruffled sleeve mini dress:

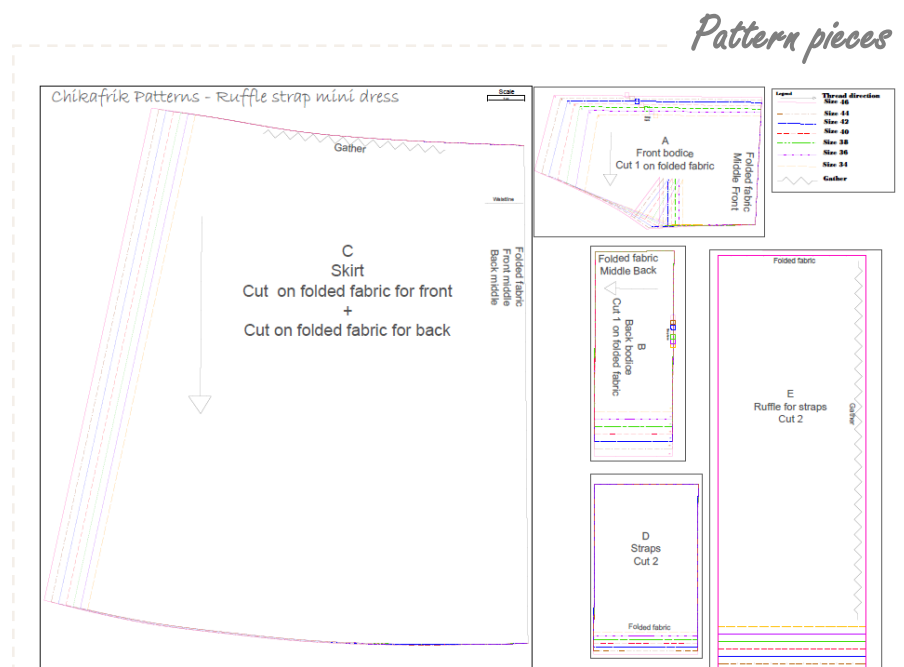
- Fabric: 1.45 width* 3.3 m length (57 *130 inch)
- Invisible zipper is optional as dress is suppose to be loose, but you can use it in the case you wanted dress to be well fitted 25 cm/ 9.8inch. Instruction to add zipper are not included as this pattern is suppose to be loose

That is all!

Pattern pieces:

- A – Front bodice, cut 1 on folded fabric
- B- back bodice, cut 1 on folded fabric
- C- Skirt, cut 2 on folded fabric
- D- Straps, cut 2 on folded fabric
- E- Ruffle for straps, cut 2 on folded fabric

Pattern already include seam allowance

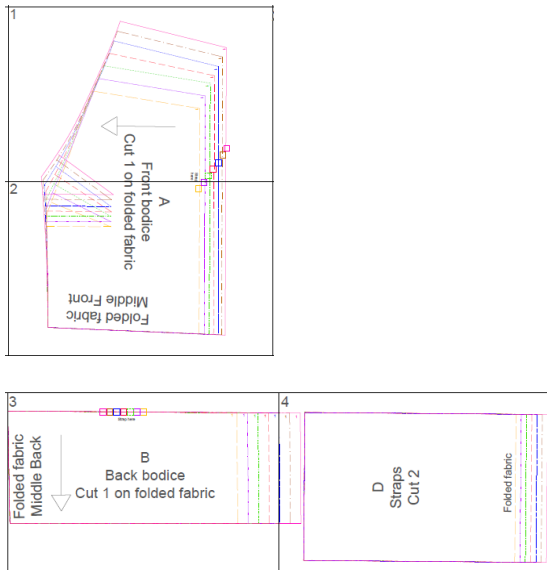


Assembling printed :

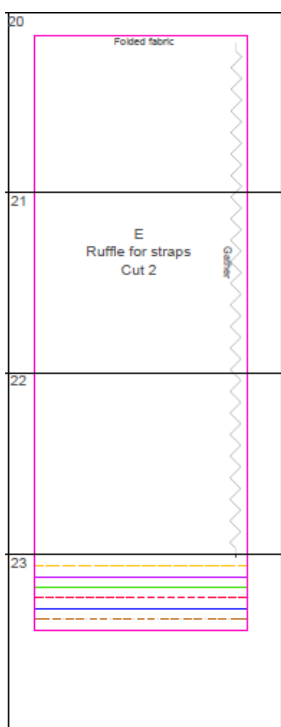
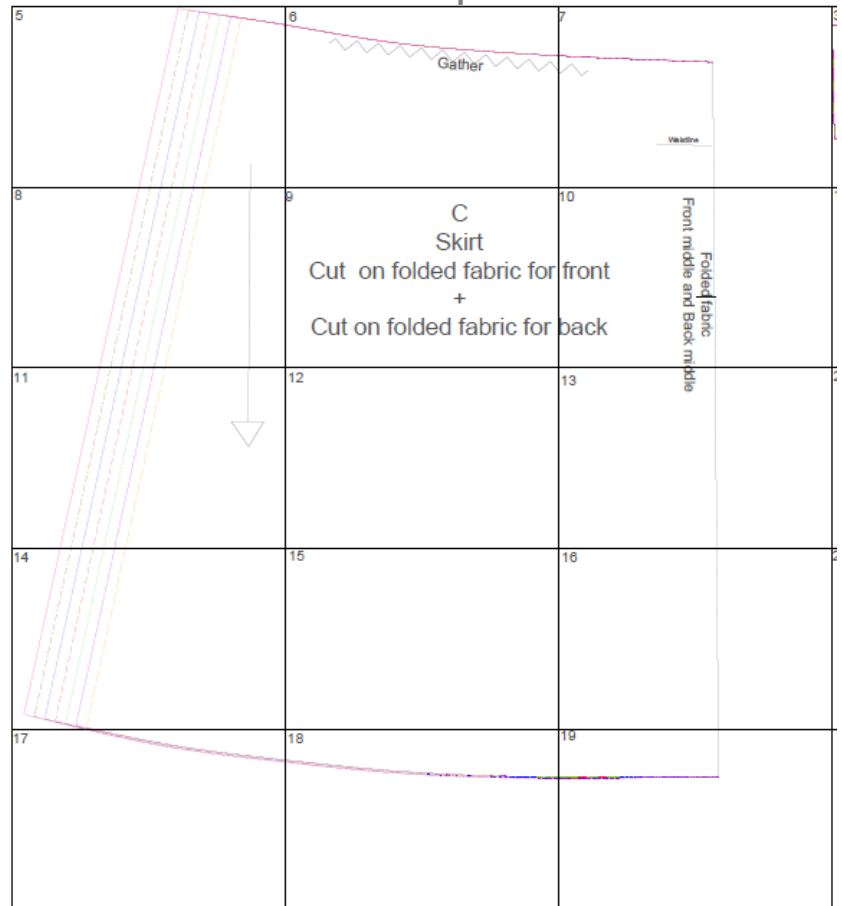
You will have 24 pages for A4 pattern and one page for A0 pattern.

Assemble A4 printed pages using number of pages and scheme below, it will make assembling easier for you

Bodice part



Skirt part



You can skip printing the strap ruffle pattern piece E (page 20 to 23) and cut directly to the fabric the ruffle piece, which is 20 cm ~ 7.9 inch for width and length:

Europe Size	Width
34	50 cm ~ 19.6 inch
36	51cm ~ 20 inch
38	52 cm ~ 20.5 inch
40	53 cm ~ 20.9 inch
42	54 cm ~ 21.2 inch
44	55 cm ~ 21.6 inch
46	56 cm ~ 22 inch

Instruction for sewing:**Bodice:**

To start, stitch the breast darts of front center panel, lay surplus down and iron. Do the same for the inside piece (lining)

Then stitch the side seams front bodice piece with back, cut a little bit from the seam surplus and then lay down and iron. Do the same for the inside piece (lining).

Straps:

Make straps first at this stage to be able to place them between the inside and outside(lining) bodice pieces. Take straps pattern piece and fold $\frac{1}{2}$ inch ~ 1.3 cm on each side and iron the fold flat. We will use the straps as a case for ruffle...

Then take the ruffle pattern piece, fold it on half (on the width) and basting stitch the top and start making a gather until the length match the length of your strap.

Take strap and place the ruffle on the folded seam (keep 1cm seam allowance of strap from 2 edges not attached to the ruffle as you will be stitching it to bodice) and fold strap over it to sandwich the ruffle and then stitch along the length.

Bodice:

Now that you finished making your straps with ruffle, take your outside bodice and place it with right fabric facing up and place the strap on the front mark, baste stitch strap in place then place the inside bodice pieces (lining) with right side fabric facing and pin it all along the top edge (neckline and arm hole) and stitch the seam allowance.

Optional : After you sew the bodice and lining, the next part is doing the understitching, the way to do that is pulling away the lining away from your bodice and you will be sewing the seam allowance to lining fabric so you will sew right along the seam but on the lining fabric side which will attach the seam allowance to lining

Now moving to sewing the straps in the back, place straps on the back mark, try the bodice to see if your happy with length of strap and cut any excess leaving just $\frac{1}{4}$ inch ~ 1cm to turn under the edge of strap and pin it to lining and you will be hand sewing it.

Skirt :

Stitch the side seams of skirt to attach front pieces with back piece. Do the same for the inside piece (lining).

Gather both inside and outside skirt.

And stitch the inside skirt to the inside bodice and do the same for the outside (lining skirt and bodice).

overcast the hem surplus of the inner skirt, fold it on the wrong side, iron, stitch it. do the same for the outer skirt

ENJOY!

If you have any questions, please don't hesitate to reach out to me i'll make sure to answer and clarify

XOXO Huda

Chikafrik Patterns

